

FloorON

Since 2010

EPOXY DONE BETTER

0403 788 852
www.flororon.com.au

Table of Content



ABOUT COMPANY



OUR JOURNEY



OUR EXPERTISE



CORE SERVICES



PROJECTS



CONTACT



About Company

With over 15 years of experience and a track record of completing more than 2,200 projects, FloorOn Epoxy is your trusted partner for transforming ordinary spaces into extraordinary works of art.

Our commitment to excellence and attention to detail sets us apart as industry leaders in epoxy flooring solutions.

Our Journey

Founded with a vision to revolutionize the flooring industry, FloorOn Epoxy has grown from a small, dedicated team to a renowned name in Melbourne.

Our journey has been marked by a relentless pursuit of quality, innovation, and customer satisfaction. Over the years, we have honed our skills, expanded our expertise, and delivered exceptional results for residential, commercial, and industrial clients.

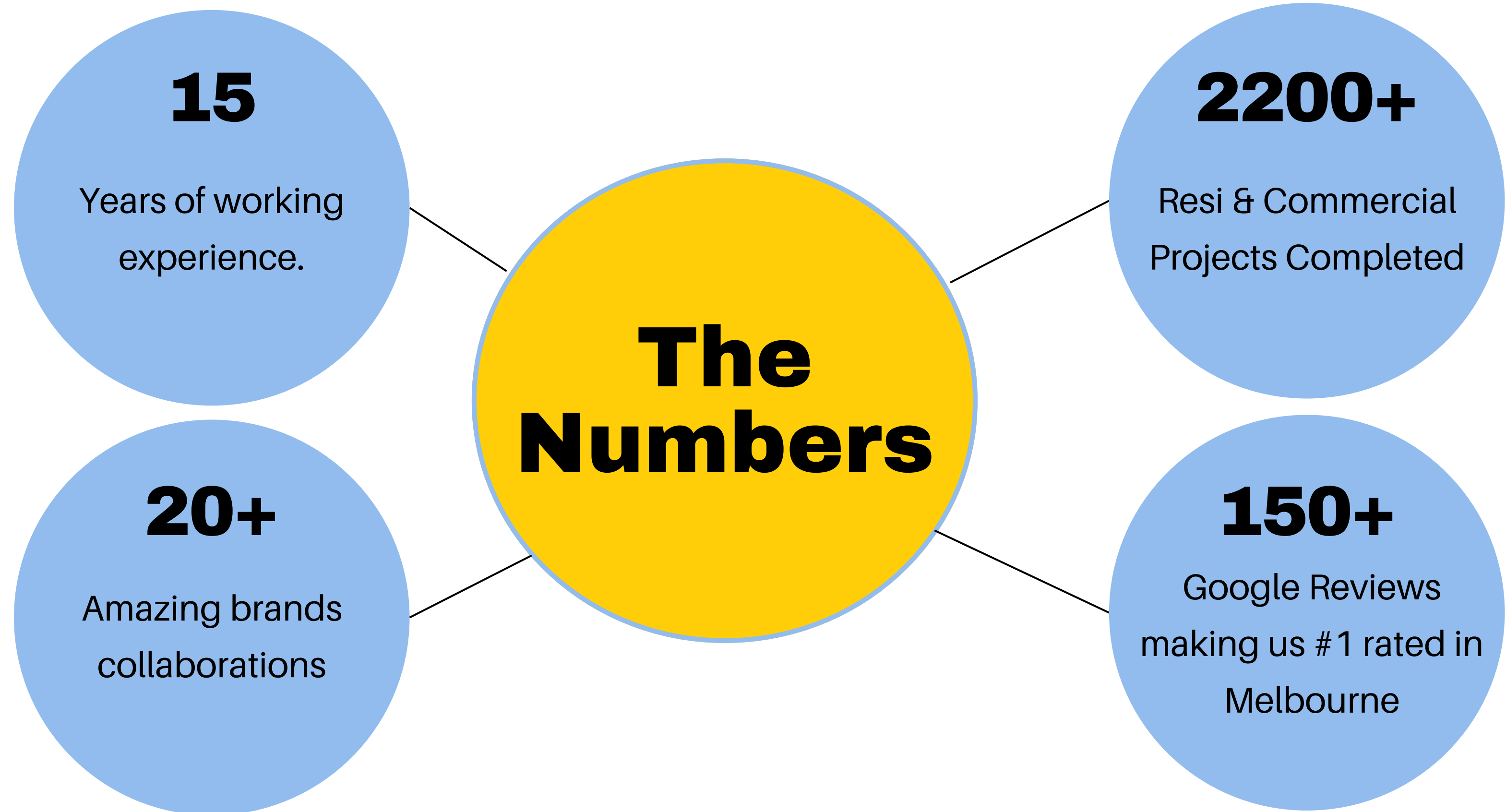


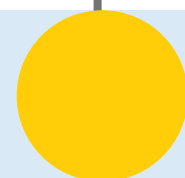
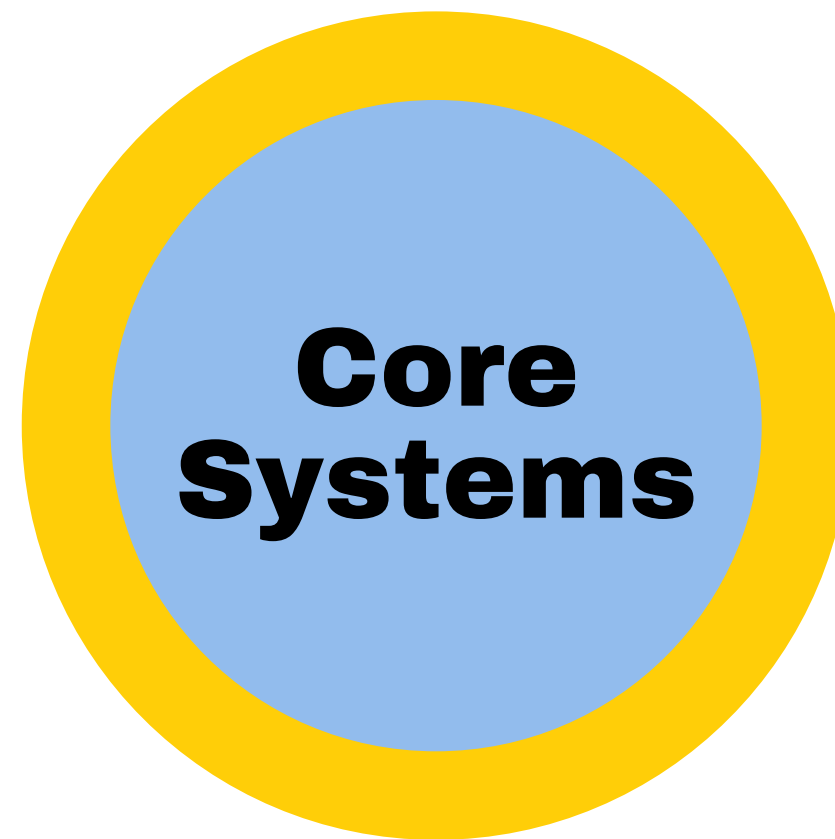
Our Expertise

At FloorOn Epoxy, we specialize in creating stunning, durable, and low-maintenance epoxy flooring solutions. Our team of skilled professionals is adept at handling a wide range of projects, from small residential makeovers to large-scale commercial installations. We offer:

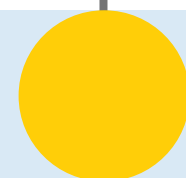
- Residential Epoxy Flooring: Transform homes with stylish and resilient epoxy floors that enhance the beauty and value of living spaces.
- Commercial Epoxy Flooring: Upgrade your business environment with durable and aesthetically pleasing flooring solutions that withstand heavy traffic.
- Industrial Epoxy Flooring: Ensure safety, durability, and functionality in your industrial spaces with our high-performance epoxy coatings.



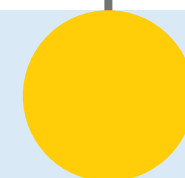




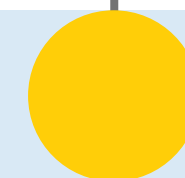
FLAKES SYSTEM



PLAIN SYSTEM




COVING SYSTEM



ANTISLIP SYSTEM

Epoxy Full Flake System



Our Systems

The epoxy full flake system is a seamless, decorative flooring solution designed for durability and safety. The system involves applying a high-build epoxy prime and base coat followed by a full broadcast of decorative vinyl flakes and sealed with a clear protective top coat.

Key features:

- Seamless and hygienic finish
- Slip-resistant surface
- High resistance to wear, stains, and chemicals
- Easy to clean and maintain

Epoxy Plain Coat System

Our Systems

The epoxy plain coat system provides a smooth, uniform finish using solid-colour epoxy coatings. This system is focused on functionality and durability rather than decorative texture.

Key features:

- Clean, smooth appearance
- Durable and hard-wearing
- Cost-effective flooring solution
- Easy to clean and maintain



Epoxy Coving System

Our Systems

The epoxy coving system creates a seamless transition between the floor and walls by forming a curved epoxy cove. This eliminates sharp corners where dirt and moisture can accumulate.



Key features:

- Hygienic, seamless floor-to-wall junction
- Improves cleanability and sanitation
- Reduces moisture ingress at edges
- Enhances durability at wall perimeters

Suitable for:

Commercial kitchens, food processing areas, laboratories, hospitals, and wash-down zones.

Epoxy Non-Slip System



Our Systems

The epoxy non-slip system incorporates slip-resistant aggregates into the coating to improve surface traction while maintaining durability.

Key features:

- Enhanced slip resistance
- Customisable texture levels
- Durable and abrasion-resistant
- Maintains safety in wet or high-risk areas

Suitable for:

Ramps, walkways, loading docks, wet areas, and commercial or industrial spaces requiring increased safety.



Core Capabilities

- Epoxy flooring systems (residential, commercial, industrial)
- Concrete surface preparation (grinding, leveling, moisture testing)
- Flake flooring systems
- Epoxy coving systems
- Crack repairs and substrate remediation
- Protective and slip-resistant coatings
- Recoating, repairs, and maintenance of existing floors



COMPANY PROFILE PRESENTATION

The Process

1

PROJECT SCOPING & QUOTING

2

CONFIRM WORK & PAY SCHEDULE

3

100% ON TIME FINISH

www.flooron.com.au



Pricing Guidelines

Epoxy flooring rates are calculated on a per square meter basis and coving works by linear meter, and are dependent on site-specific conditions and system requirements. Pricing takes into account total floor area, substrate condition and preparation requirements, selected epoxy system, coating thickness, and number of coats.

Allowances are also made for access constraints, site conditions, moisture testing, repair works, environmental controls, and project timeframes. Final pricing is subject to site inspection and system suitability.

Clients We've Worked with

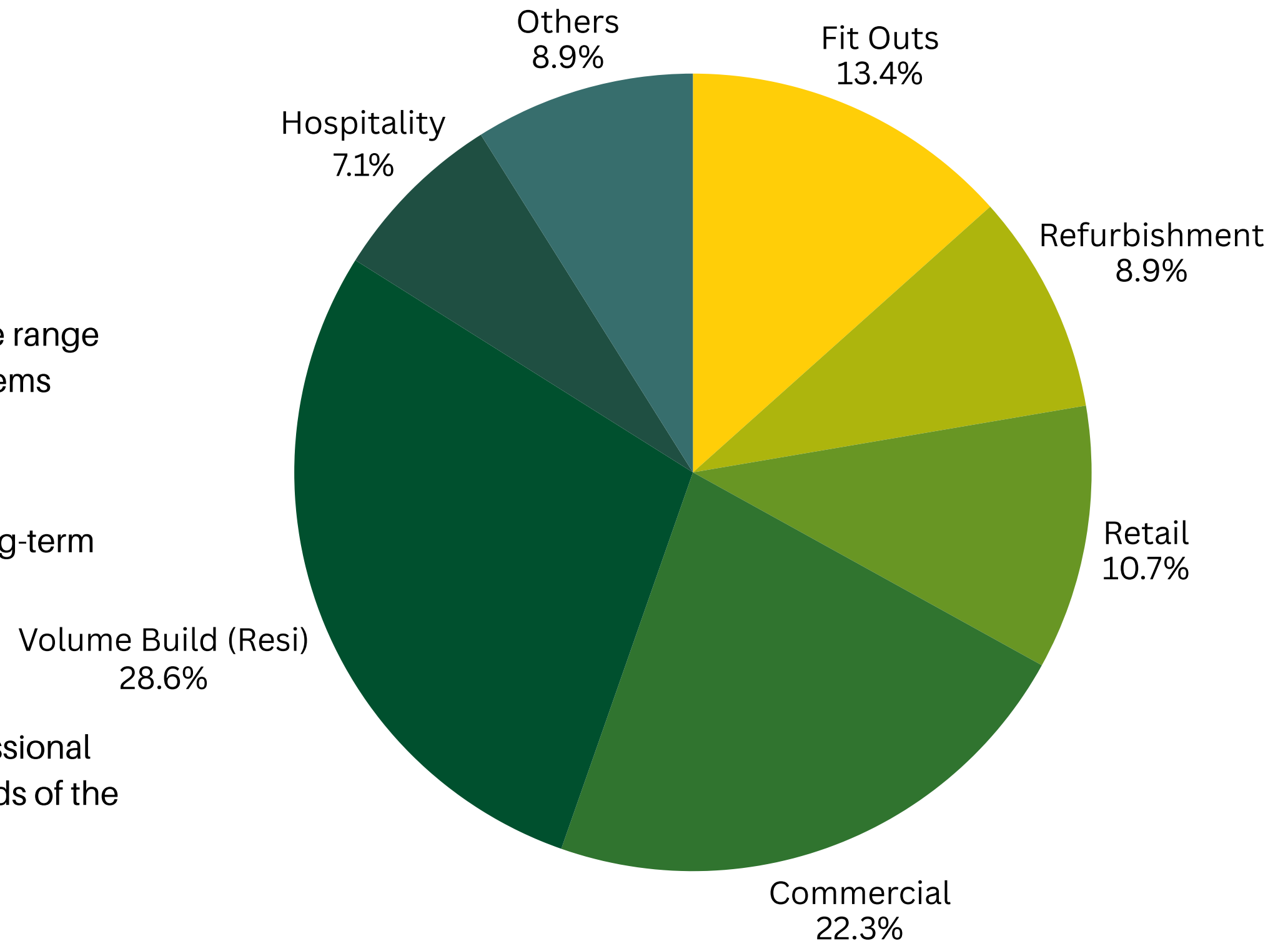


and counting.....

www.flooron.com.au

Market Sectors

- FloorOn delivers epoxy flooring solutions across a wide range of market sectors, providing durable and practical systems tailored to each environment's operational and safety requirements.
- Our systems are designed for durability, safety, and long-term performance.
- We minimise downtime while delivering a clean, professional finish. Our systems are selected to suit the specific needs of the space.



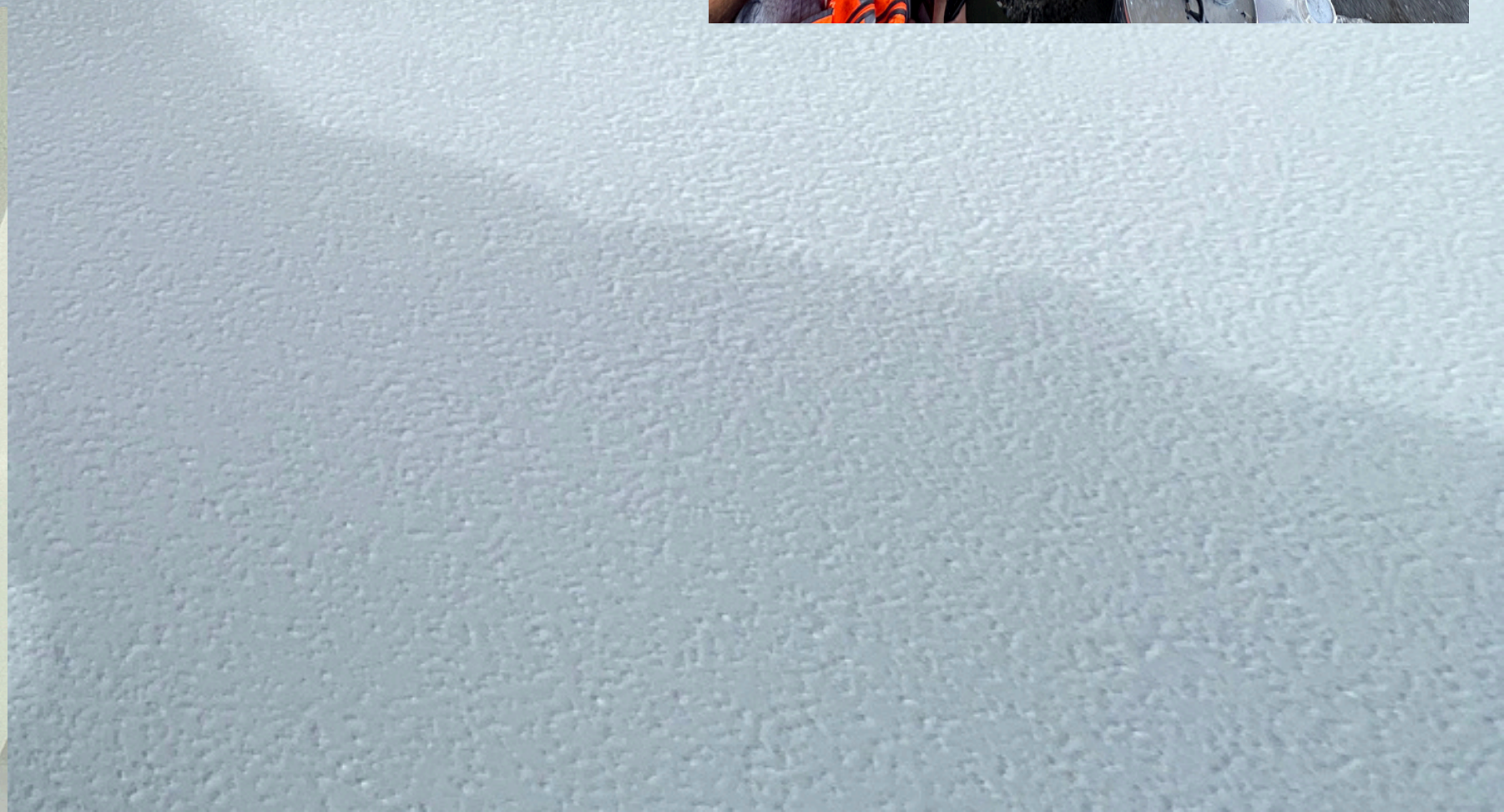
Past Projects

FloorOn have assisted these clients on the following Major Projects:

Metricon Homes, Craigieburn, VIC (Multiple Sites) - 4050m²

FloorOn was engaged to deliver epoxy flooring works across a portfolio of approximately 135 residential properties for Metricon Homes, comprising a mix of single and double garages. The scope of works included mechanical surface preparation of new concrete substrates followed by the installation of a **single-colour epoxy non-slip flooring system**, providing a durable, safe, and low-maintenance finish suitable for residential garage use. Works were delivered progressively in line with construction schedules across multiple sites.

The primary challenges involved coordinating installations across numerous locations, varying site readiness, and maintaining consistent quality and finish throughout the program. These were managed through structured scheduling, pre-start site checks, and standardised application procedures. By maintaining clear communication with site supervisors and adhering to strict preparation and quality controls, FloorOn successfully delivered the works efficiently while meeting program requirements and performance expectations.



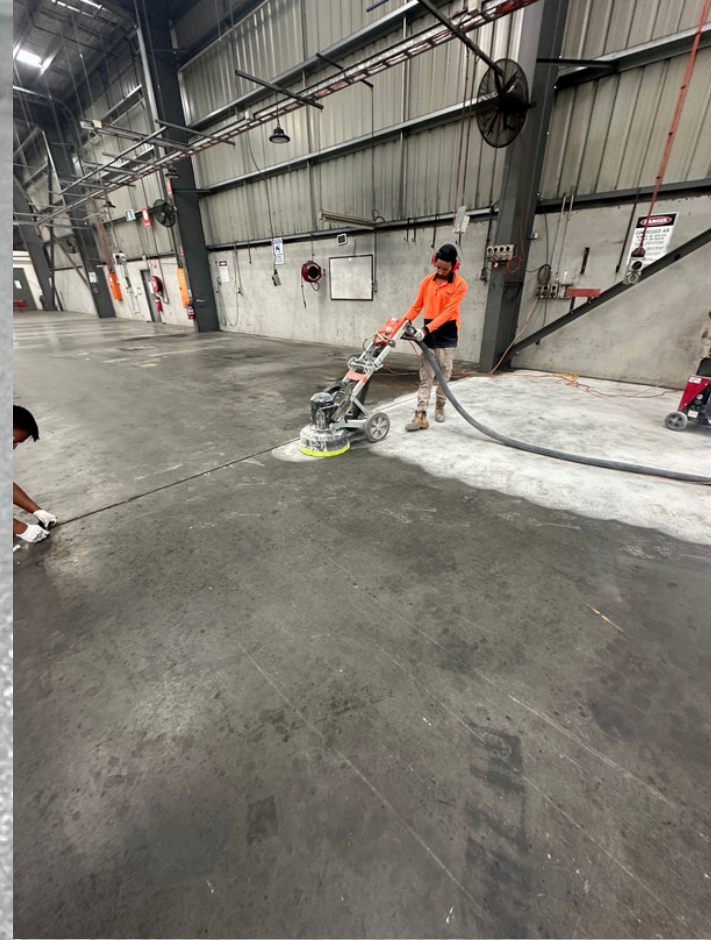
Past Projects

FloorOn have assisted these clients on the following Major Projects:

Pact Packaging, Truganina, VIC - Commercial Facility - 1020m2

FloorOn was engaged to carry out epoxy flooring works at a Pact Packaging commercial facility within an active operational environment. The scope included mechanical surface preparation and installation of a durable epoxy flooring system designed to withstand ongoing foot traffic and operational use. Works were staged to align with site requirements while maintaining safety and productivity.

The key challenge was coordinating the installation while staff and operations continued on site. This was managed through careful planning, staged work zones, and clear communication with site management to minimise disruption. By implementing controlled work areas, weekend scheduling, and strict safety procedures, FloorOn successfully completed the installation while allowing day-to-day operations to continue uninterrupted.



Past Projects

FloorOn have assisted these clients on the following Major Projects:

Varcon – Multiple Warehouse Facilities - 795m²

FloorOn was engaged to complete epoxy flooring works across multiple warehouse facilities for Varcon. The scope of works included mechanical surface preparation and installation of a plain colour epoxy flooring system suitable for high-traffic warehouse environments. Works were delivered across several locations under a coordinated program.

The primary challenge was managing weather-related delays, particularly rainy conditions that affected substrate dryness and moisture levels. This was addressed through close monitoring of weather forecasts, flexible scheduling, and additional drying time to ensure moisture compliance prior to coating application. By maintaining strict moisture testing and adjusting the programme as required, FloorOn ensured system performance and quality were not compromised.



Past Projects

FloorOn have assisted these clients on the following Major Projects:

Victor Foster Reserve Pavilion Upgrade, Craigeburn, VIC - Commercial Fit-Out

FloorOn was engaged to install a full flake epoxy flooring system within a pavilion club room as part of a coordinated commercial fit-out. The scope of works included mechanical surface preparation, application of an epoxy primer & base coat, full broadcast decorative flakes, and clear protective top coat to deliver a durable, slip-resistant, and visually consistent finish suitable for a high-use public space.

The primary challenges were coordinating with multiple trades on site and meeting a strict project completion deadline. These were overcome through detailed planning, close communication with the builder and other contractors, and careful sequencing of works to avoid conflicts. By maintaining tight program control and quality checks, FloorOn successfully delivered the project on time and to the required finish standard.



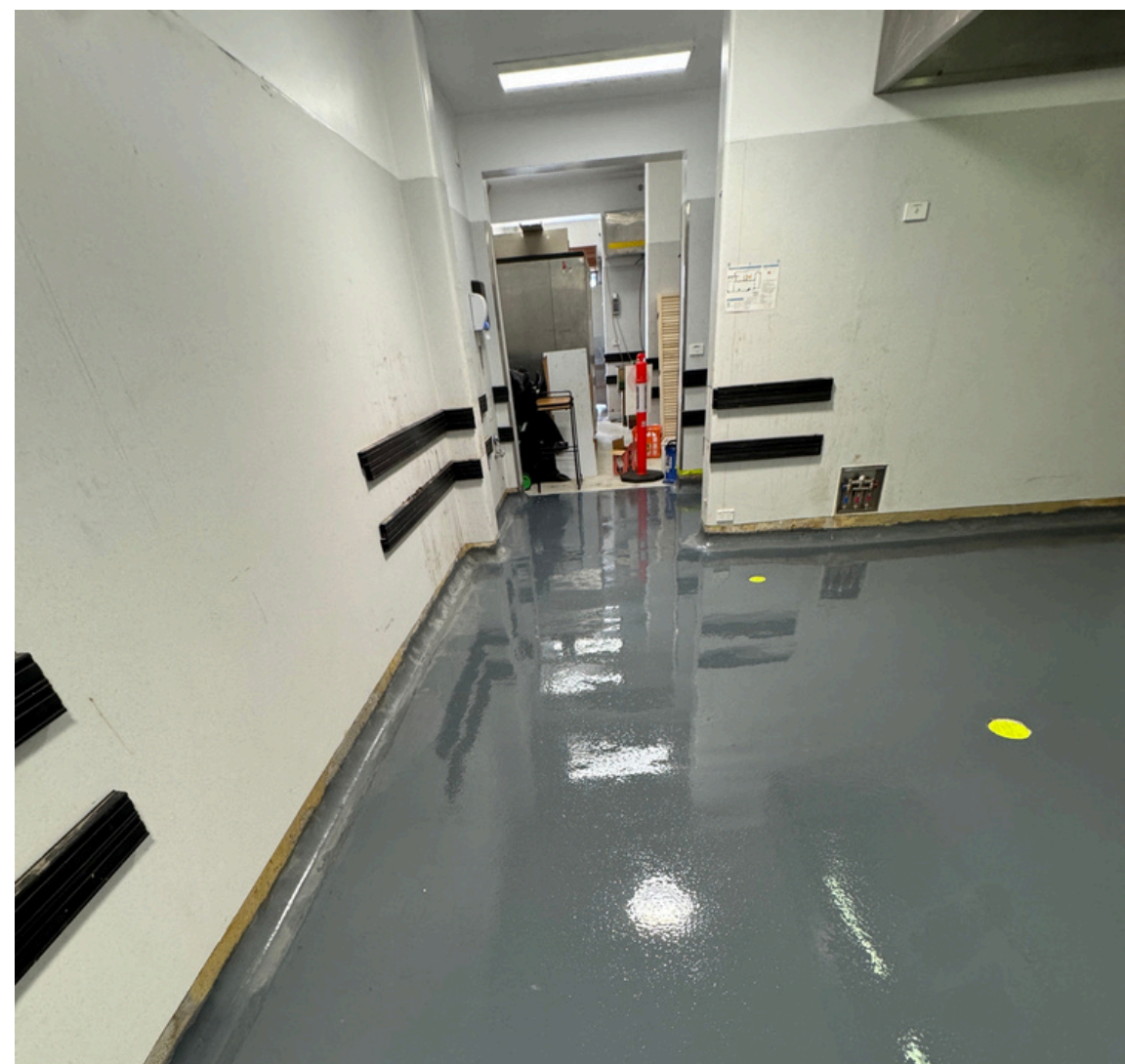
Past Projects

FloorOn have assisted these clients on the following Major Projects:

Melbourne Youth Justice Centre – Kitchen Upgrade, Parkville, VIC

FloorOn was engaged to deliver epoxy flooring works as part of a kitchen upgrade at the Melbourne Youth Justice Centre. The scope of works included mechanical surface preparation, installation of a plain epoxy flooring system, and epoxy coving to create a seamless and hygienic floor-to-wall junction suitable for a commercial kitchen environment.

The key challenges included working within a secure facility and coordinating works with other trades while meeting strict hygiene and compliance requirements. These were managed through detailed planning, controlled access procedures, and close coordination with site management. By maintaining clear communication and adhering to program and quality standards, FloorOn successfully delivered a durable, compliant flooring solution within the required timeframe.



Past Projects

FloorOn have assisted these clients on the following Major Projects:

Moisture Barrier + 5 Coats Flake System - Kitchen Area, Eltham, VIC

FloorOn was engaged to install a full flake epoxy flooring system within a commercial kitchen area. The scope of works included mechanical surface preparation, application of a moisture barrier due to elevated moisture levels, followed by our 5 coat flake system. The system was designed to deliver a durable, slip-resistant, and hygienic finish suitable for a food preparation environment.

The key challenges were the tight working space, limited access, and a compressed installation timeframe. These were managed through detailed planning, efficient work sequencing, and strict adherence to curing and moisture control requirements. By coordinating closely with site management and allocating appropriate resources, FloorOn successfully completed the installation within the required timeframe without compromising performance or finish quality.



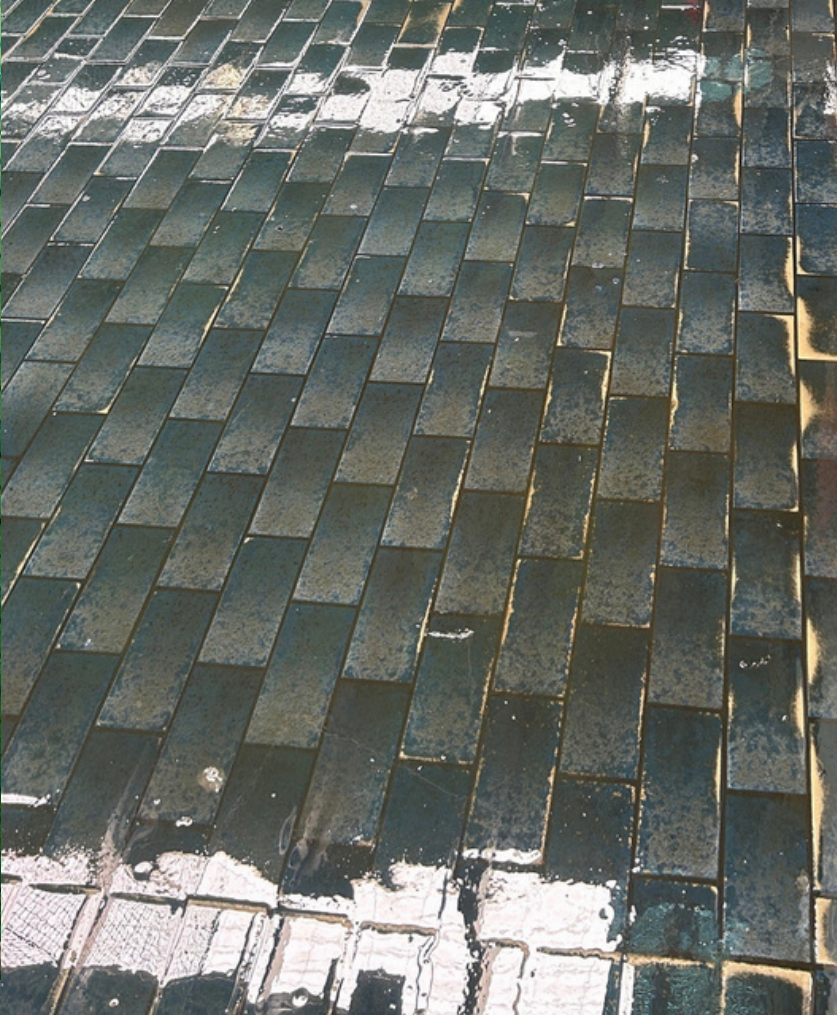
Past Projects

FloorOn have assisted these clients on the following Major Projects:

Werribee Indoor Sports Club, Weerribee, VIC - 450m2

FloorOn was engaged to complete a flooring upgrade at a sports club facility, delivering a full flake epoxy flooring system across high-use areas. The scope of works included removal of existing carpet finishes, extensive surface preparation, and installation of the epoxy system over existing tiled substrates where required. Mechanical grinding and surface profiling were carried out to ensure proper adhesion and long-term performance across varying substrate conditions.

The key challenges involved the high level of preparation required, managing multiple substrate types, and coordinating works within an active club environment. These were overcome through detailed planning, thorough surface assessment, and staged installation to minimise disruption. By applying consistent preparation standards and carefully sequencing the works, FloorOn successfully delivered a durable, slip-resistant flooring solution with a clean, professional finish suitable for ongoing heavy use.



Let's Connect



0403 788 852



sales@flooron.com.au



www.flooron.com.au

